

## ALCOR



### Standard equipment:



- 5.511.1688  
PPL brush Ø 430 mm - 17"



- 4.508.X468  
Front squeegee blade L.830 mm Shore 40 Th. 2.5 mm
- 4.508.X467  
Rear squeegee blade L.870 mm Shore 40 Th. 3 mm



- 0.108.0042  
On-board Battery charger CBHD1 24V 10A  
only for model code:  
8.524.1001  
8.524.0001



- 2 x 0.107.0061  
Maintenance free battery 12 MFP 50 - 12V 50Ah  
only for model code:  
8.524.0001



- Suitable to work in high congested areas like wellness centres and medical environments in general, gyms, retail outlets, car shops, sales points and health care
- Solution water filter and solenoid valve (battery model only)
- User friendly control panel
- Hour meter (optional)
- Chemical dosing system on request
- Recovery water tank with visual inspection
- Reclining handle with control lever (battery model only)
- Low noise operation thanks to the protected positioning of vacuum motor
- Recovery tank drain hose with adjustable flow system
- Indicator of the solution water tank fill level
- Easy access to the recovery tank
- Non-marking wheels.



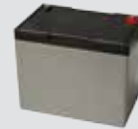
Watch the video on youtube:  
[www.youtube.com/ctmcleaning](http://www.youtube.com/ctmcleaning)

	Alcor 43E	Alcor 43B	Alcor 43B
code	8.524.3301	8.524.1001	8.524.0001
power supply	230 V - 50 Hz	24V (battery charger included)	24V (Battery and battery charger included)
scrubbing / squeegee width	450 / 800 mm	450 / 800 mm	450 / 800 mm
max working capacity	1575 m <sup>2</sup> /h	1575 m <sup>2</sup> /h	1575 m <sup>2</sup> /h
detergent tank capacity	25 l / 6.61 gal	25 l / 6.61 gal	25 l / 6.61 gal
recovery tank capacity	25-28 l / 6.61 gal	25-28 l / 6.61 gal	25-28 l / 6.61 gal
traction	mechanical	mechanical	mechanical
RPM / pressure on the brushes	140/25 kg / 39,68 lbs	150/18 kg / 39,68 lbs	150/18 kg / 39,68 lbs
brush motor power	550 W	450 W	450 W
detergent solution system	mechanical	solenoid valve	solenoid valve
depression / vacuum motor	1733 mmH <sub>2</sub> O/550 W	1100 mmH <sub>2</sub> O/370 W	1100 mmH <sub>2</sub> O/370 W
dimensions / weight	106x50x88 cm / 65 kg	106x50x88 cm / 87kg	106x50x88 cm / 87kg



User friendly analogic control panel. Control lever for brush operation and detergent water outflow. ON/OFF and battery cutout key switch, brush and vacuum motor switch, detergent dosing knob (optional), Thermal circuit breaker to protect vacuum and brush motor, battery level indicator, hour meter (optional).

### Optional accessories:



- 0.107.0065 Battery AGM 12V 60Ah C5 - 75A C20



- 4.508.1178 Polyurethane front blade L.830 TH. 3
- 4.508.1177 Polyurethane rear blade L.870 TH. 4



- 5.511.1713 Tynex brush Ø 430 mm-17"
- 5.511.1711 PPL 0,03 brush Ø 430 mm-17"
- 5.511.1712 PES brush Ø 430 mm - 17"



- 5.511.1095 EWU pad driver Ø 430 mm-17"



(5 pcs package)

- 6.508.0032 Abrasive pad Ø 430 mm-17" - beige
- 6.508.0039 Abrasive pad Ø 430 mm-17" - green
- 6.508.0046 Abrasive pad Ø 430 mm-17" - black



- 4.512.0068 Extension electric cord 15 m with Schuko plug

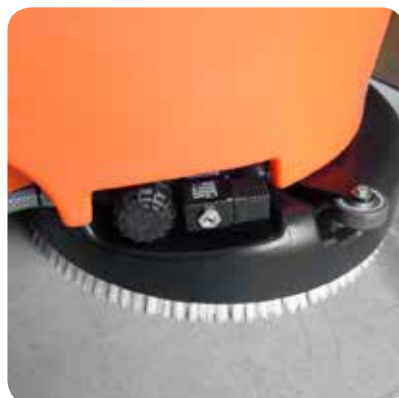
Automatic detergent dosing system on request. Indicator of clean water tank level. Detergent solution regulation. Recovery tank drain hose with adjustable flow system.



Easy access to recovery water tank with visual inspection. Extremely silent (62 dB) thanks to the particular housing of the vacuum motor and the use of soundproofing material.



Thanks to the special squeegee support it is easily possible the tilting of the machine to carry out the drying of the floor without scrubbing. The oversize wheels facilitate maneuverability and effortless use.



- 5.511.1687 Automatic detergent dosing system on request.